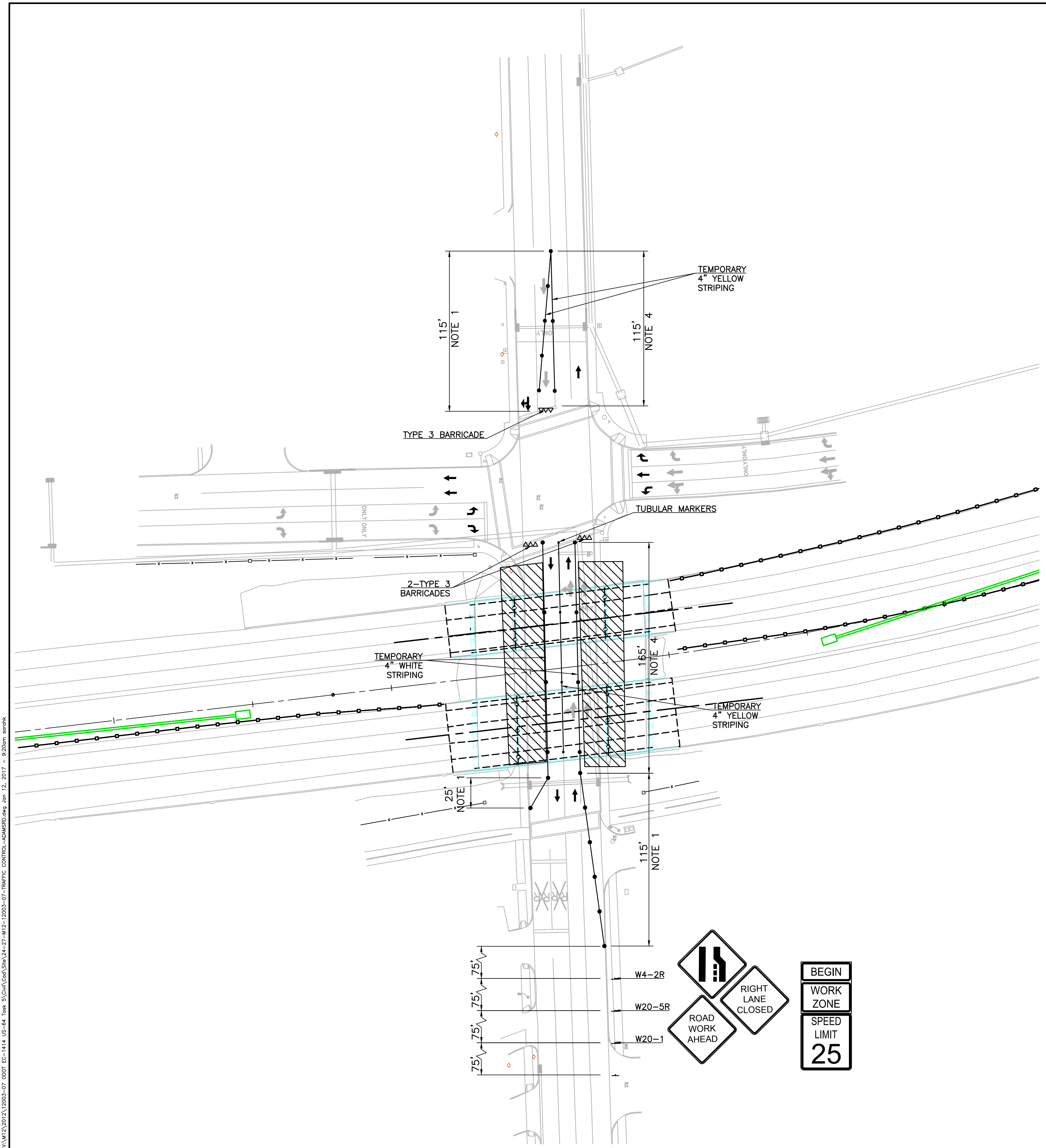
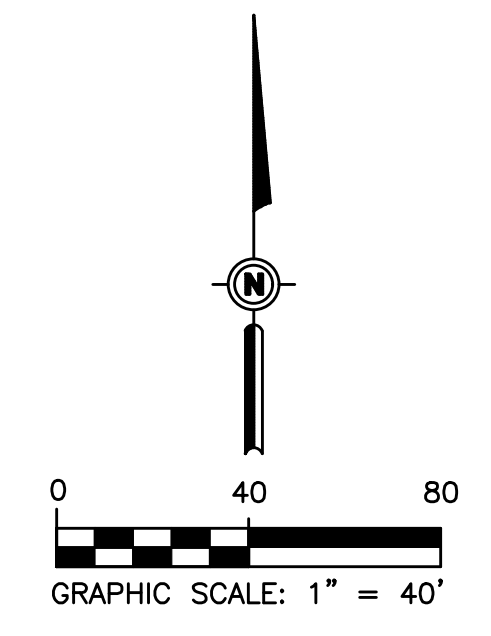


REVISIONS		
REV. NO.	DESCRIPTION	DATE

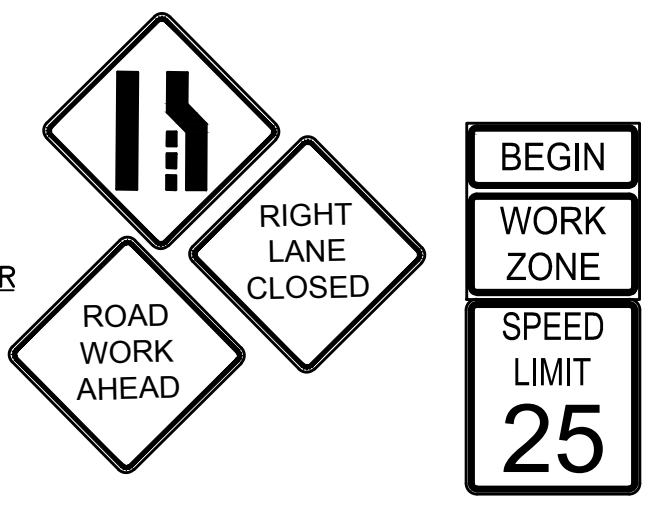


**NOTES**

1. MAXIMUM SPACING BETWEEN CHANNELIZING DEVICES (FEET) SHALL BE EQUAL TO THE POSTED SPEED LIMIT (M.P.H.) WITH THE FOLLOWING EXCEPTIONS. SPACING SHALL NOT EXCEED 25 FEET FOR CONES OR TUBE CHANNELIZERS; IT SHALL NOT EXCEED 50 FEET FOR TYPE II BARRICADES, VERTICAL PANELS OR DRUMS.
2. CONSTRUCTION SPEED LIMIT TO BE SET AT 25 MILES PER HOUR
3. MAXIMUM SPACING BETWEEN CHANNELIZING DEVICES (FEET) SHALL BE EQUAL TO TWICE THE POSTED SPEED LIMIT (M.P.H.) WITH THE FOLLOWING EXCEPTIONS. SPACING SHALL NOT EXCEED 50 FEET FOR CONES OR TUBE CHANNELIZERS; IT SHALL NOT EXCEED 100 FEET FOR TYPE II BARRICADES, VERTICAL PANELS OR DRUMS.
4. FOR INFORMATION REGARDING THE LENGTHS OF TAPERS, TANGENTS, AND CROSSOVERS, AS WELL AS THE SPACING OF CHANNELIZING DEVICES, SEE STANDARDS DRAWING TCS2-1-(LATEST REVISION).

**LEGEND**

- CHANNELIZING DEVICE
- ▲▲▲ TYPE III BARRICADE
- TUBULAR MARKER
- SIGNS
- WORK AREA



TULSA COUNTY US-64 OVER 97TH W. AVE.

DESIGN	DGS	11/16
DRAWN	SDK	11/16
CHECKED	HRA	11/16
APPROVED		
WALTER P MOORE		

OKLAHOMA DEPARTMENT OF TRANSPORTATION

**TRAFFIC PHASING  
ADAMS ROAD  
(PHASE 3)**

STATE JOB NO. 28884(04) SHEET NO. 26

X:\M12\1015\1005-07 0007 EC-1414 US-64 Task 5\Civil\Draw\14-27-M12-1005-07-TRAFIC CONTROL-DRAWING.dwg Jun 12, 2017 - 9:20am sarak